

EPMT 1 YEAR SPECIAL EDITION

10 September 2016

Migration to Europe - Arrivals by sea (1 Jan - 28 August)

2015 **354,618** 2016 **272,070**

Source: International Organization for Migration. Last update: 2 September 2016.



The Central Mediterranean route remains the primary route for migrant smuggling into the EU.



The main migratory flow passes via Italy, Switzerland and Austria.



New alternative routes via air, sea and land are increasingly used.

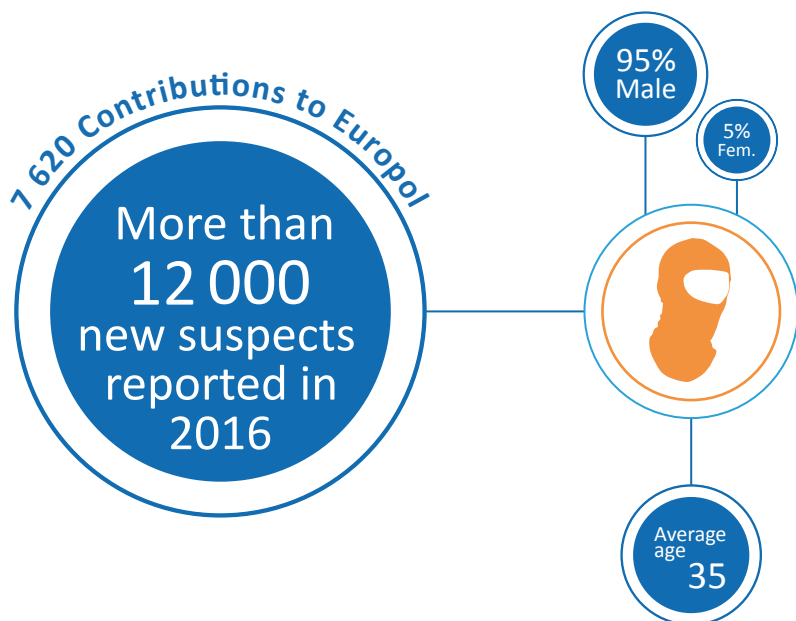


Concealment in lorries and trucks remains the most common modus operandi for secondary movements.



Increased reporting of labour exploitation of irregular migrants.

CRIMINAL NETWORKS



Key changes in nationalities of reported suspects

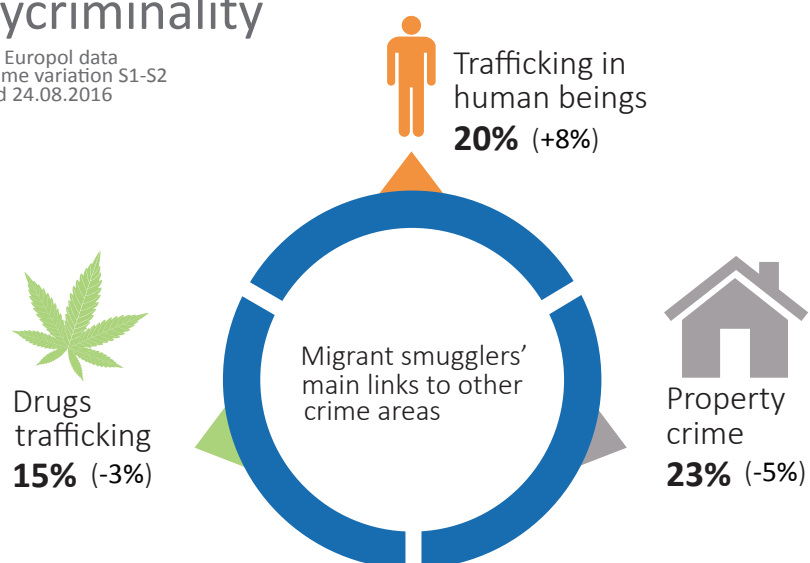
Source: Europol data
Timeframe: 2015 & 2016 (24/08/2016)
Suspects of which the nationality is known: N 2015= 4081; N 2016= 3992.
Total N of different nationalities reported in 2015= 107, 2016= 93.

TOP 10 Nationality of suspects	2015	TOP 10 Nationality of suspects	Jan-Aug 2016*	Variation in %
Romania	350	Turkey	423	+295,3
Egypt	336	Syria	364	+39,5
Syria	261	Romania	216	-38,3
Poland	259	Bulgaria	168	+1,2
Tunisia	180	Egypt	167	-50,3
Hungary	178	Iraq	152	+12,6
Bulgaria	166	Ukraine	149	+156,9
Iraq	135	Poland	136	-47,5
Turkey	107	United Kingdom	136	+32
United Kingdom	103	Senegal	103	+28,8

*Top MS Contributors in 2016: Italy, United Kingdom, Greece, Austria, Belgium, Hungary, France, Spain, Ireland, Bulgaria, Netherlands, Romania and Poland.

Polycriminality

Source: Europol data
Timeframe variation S1-S2
updated 24.08.2016



Modes of payment

2015

0,2% Labour Exploitation

20% Alternative Banking Systems (Hawala)

52% Cash

27,8% Others (Family in EU financed the travel, money service businesses, unknown)

2016

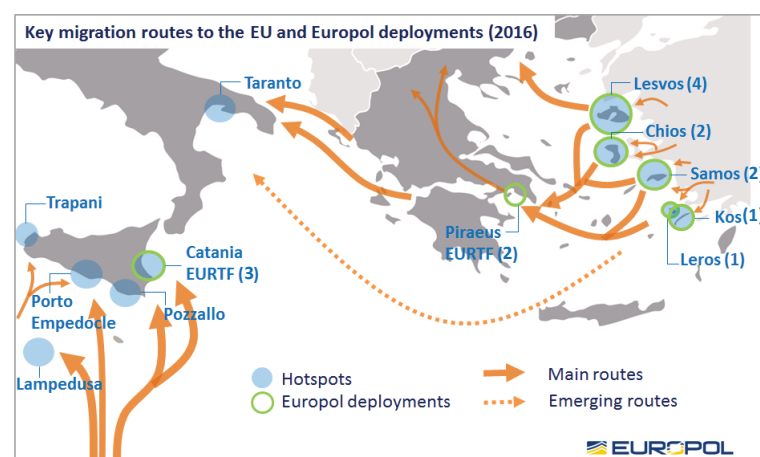
5% Labour Exploitation

27% Alternative Banking Systems (Hawala)

64% Cash

4% Others (Family in EU financed the travel, money service businesses, unknown)

EUROPOL RESPONSE



Capabilities



EMSC
European Migrant Smuggling Centre

Europol Migrant Smuggling Centre (EMSC) was launched in February 2016.



42 Experts and analysts providing operational and analytical support.



15 Europol specialists deployed at the hotspots in Greece and Italy.

Operational support

62

High level investigations supported.

2

Joint Investigation Teams (JITs).

>500

Vessels of interest identified.

274

Cases on document fraud contributed in 2016.

FUTURE EXPECTATIONS

Increased migratory pressure on the South Eastern entry route.

Emergence of bottlenecks and informal camps on intra-Schengen border areas.

Increased labour exploitation of migrants in transit and destination countries.

Increasing use of vessels in poor conditions able to float only for a few hours.

Continued use of private and commercial vans for intra-EU migrant smuggling.